



Product Specifications

RawlPlug . Brass Anchor



TYPICAL APPLICATIONS

- Fixing mechanical services
- Cable trays
- Platforms
- Drain covers
- Suspended ceilings.

DESCRIPTION

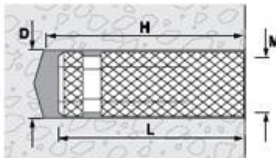
The Lipped Wedge Anchor provides an easy to install fixing. Allows for bolts and studs to be installed and removed without damaging the anchor. Install with manual setting tool or mechanical setting tool for use with hammer action drilling machines.

SUITABLE FOR USE IN:

Concrete
Stone.

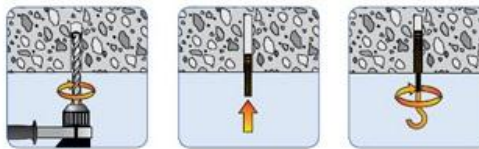
FEATURES

1. Internally threaded to take stud or bolt.
2. Easy to install flush to the surface.
3. Ideal for setting in cavity ceilings.



M - THREAD SIZE (mm)	D - HOLE DIAMETER (mm)	H - HOLE DEPTH (mm)	L - ANCHOR LENGTH (mm)	QUANTITY		PRODUCT CODE
				PACK	OUTER	
M5	7	22	20	100	2400	TM-05
M6	8	27	25	100	2400	TM-06
M8	10	32	30	100	2400	TM-08
M10	12	43	40	100	2400	TM-10
M12	15	40	38	50	1200	TM-12
M16	20	48	45	50	1200	TM-16

Installation



Source: http://www.rawlplug.co.uk/index.php?option=com_content&task=view&id=12&Itemid=25