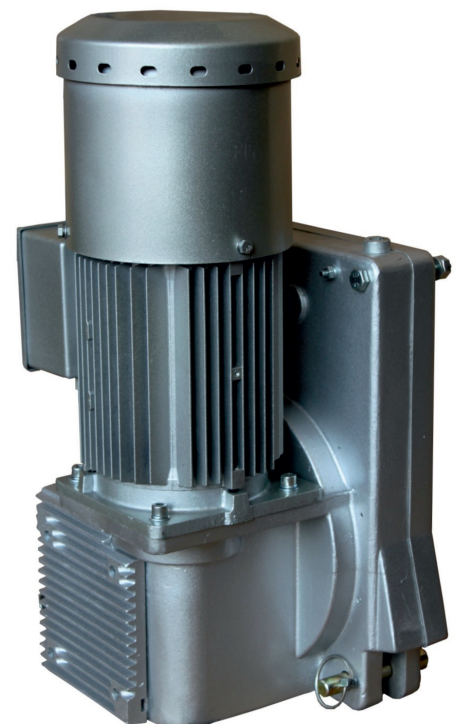


# OSLER<sup>®</sup> Sky Hoist Motor

The OSLER Sky Hoist Motor is supplied with a 3-Phase DC electromagnetic brake with a load capacity of 630 Kg and designed for economical, light and perfectly safe and easy to maintain as well as easy to use.

## FEATURES:

- Fast, Light Weight & compact Design
- Reliable
- Unlimited Working Height
- Easy Access to Electrical and Mechanical Components
- Manual Descent in case of Power Cut Off



## Technical Data

Type	Sky
Rate Load (Kg)	700
Engine Output (Kw)	1.5
Rated Current (A)	2.7
Climbing Speed (m/min)	9
Unit Weight (Kg)	48
Power (V)	380 / 3 Phase
Frequency (Hz)	50
Rotation Speed (rpm)	1420
Braking Torque (Nm)	12
Brake	DC